

Directions: Find the distance between the following set of coordinates.

1. $(7, 3), (-1, -4)$

2. $(3, -5), (-3, 0)$

3. $(6, -7), (3, -5)$

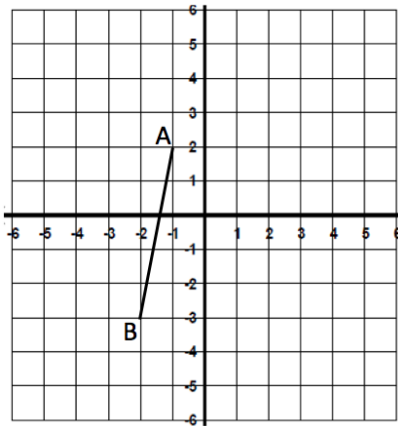
4. $(5, 1), (5, -6)$

5. $(1, 4), (2, 5)$

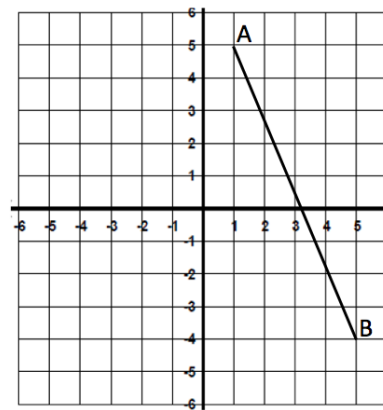
6. $(-2, 1), (1, 8)$

Directions: Find the distance of the segment on each graph by using the Pythagorean Theorem.

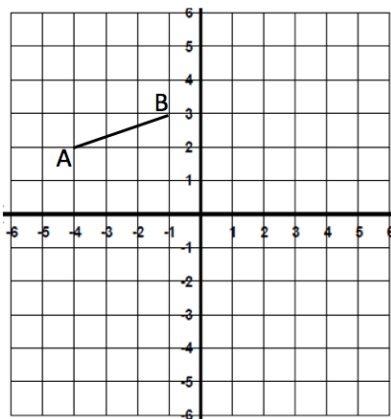
7.



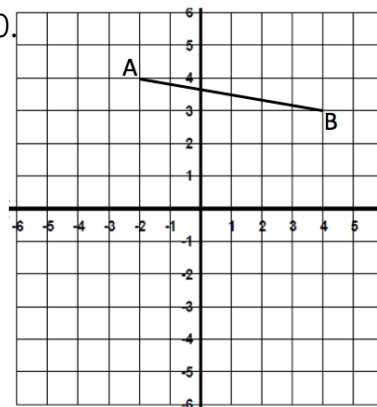
8.



9.



10.



Directions: Find the perimeter of the figure using either the distance formula or the Pythagorean Theorem.

