

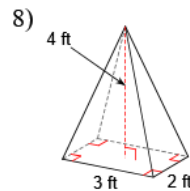
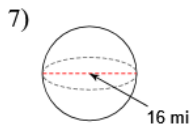
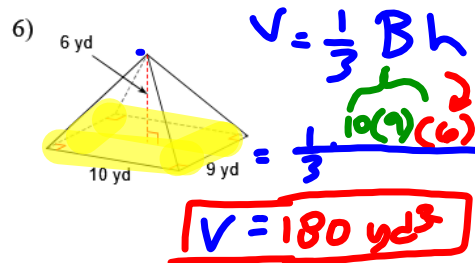
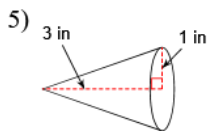
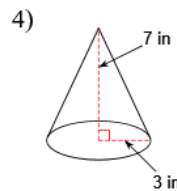
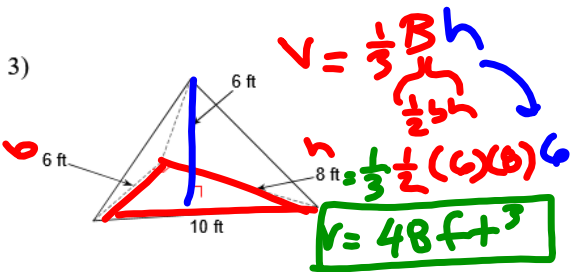
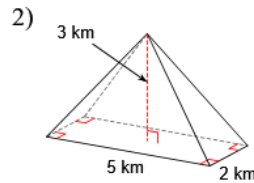
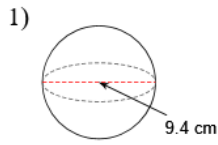
Geometry

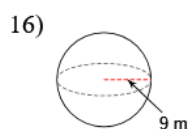
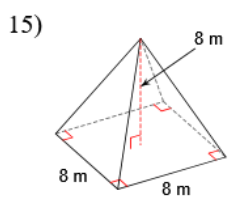
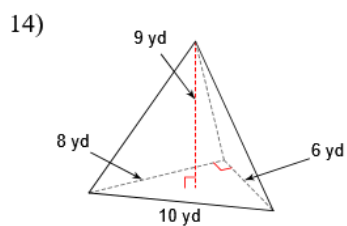
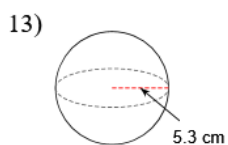
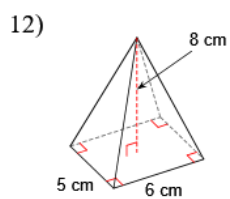
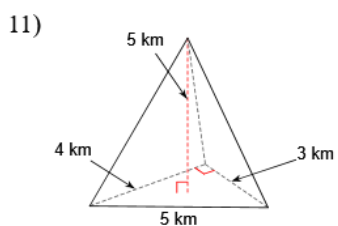
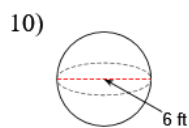
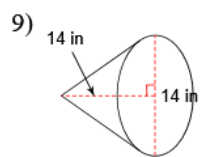
Name _____

Volume - Cones and Pyramids

Date _____ Period _____

Find the volume of each figure. Round your answers to the nearest hundredth, if necessary.





Answers to Volume - Cones and Pyramids

1) 434.89 cm^3

5) 3.14 in^3

9) 718.38 in^3

13) 623.61 cm^3

2) 10 km^3

6) 180 yd^3

10) 113.1 ft^3

14) 72 yd^3

3) 48 ft^3

7) 2144.66 mi^3

11) 10 km^3

15) 170.67 m^3

4) 65.97 in^3

8) 8 ft^3

12) 80 cm^3

16) 3053.63 m^3

$$V_{\text{sphere}} = \frac{4}{3} \pi r^3 \quad V_{\text{cone}} = \frac{\pi r^2 h}{3} \quad V_{\text{pyramid}} = \frac{Bh}{3}$$
$$= \frac{(b \cdot h) h}{3}$$